



D-500 Threaded Closures

Sizes: 2- through 14-inch



T.D. Williamson

Bulletin No: 5100.004.01
Version: 06.2012
Cross Indexing No: n/a
Supersedes: 5100.004.00 (11.2010)



■ D-500 Threaded Closure with Horizontal Hinge

■ D-500 Threaded Closure without Hinge

■ D-500 Threaded Closure with Vertical Hinge

Options*

T.D. Williamson, Inc. is committed to providing you with the exact product to assist you in planning, budgeting and meeting the specifications for your individual application needs. The following options are available:

- Special Materials
- Material Certification
- Pressure Testing
- Special O-ring Material (standard O-ring material is Viton®)
- Taper-Bored to Match Pipe-Wall Thickness
- Special Design for Vertical Installation
- Horizontal hinges are standard on closures 10-inch and larger and are optional in sizes 4-, 6- and 8-inch

* Consult factory for additional options.

Description

TDW D-500 Threaded Closures are easy-to-open closures suitable for use on pig traps, filters, strainers, scrubbers, heat exchangers, blowdowns, and many other types of vessels. They operate in fluids such as natural gas, refined products, water and crude oil.

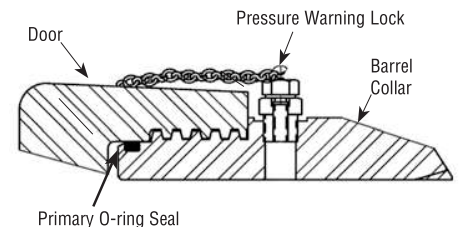
TDW D-500 Closures are available in sizes 2- through 14-inch. Sizes 2- through 8-inch without hinges are standard stock. Sizes 10- through 14-inch with horizontal hinges are standard stock. Vertical hinged closures in sizes 4- through 8-inch are special order. All closures are furnished with material test certificates upon request.

TDW also designs, engineers and fabricates complete pigging systems that consist of launchers, receivers, closures, handling equipment, skids, pig passage indicators, launch pins, valves and piping, pigs, and spheres. TDW provides these systems in standard designs or built to the customer's specifications.

Features

The TDW D-500 Threaded Closure, available in sizes 2- through 14-inch, offers important advantages:

- A reliable seal. The large, cross-sectional diameter O-ring located on the barrel collar maintains a positive seal.
- Competitive price. The simple design of the TDW D-500 Threaded Closure means economical production.
- Quick delivery. TDW manufactures threaded closures in large quantities and keeps a well-stocked inventory to fill your orders promptly.
- Safety features. All threaded closures are equipped with a pressure warning lock, in accordance with UG-35 of ASME Sect. VIII, Div. 1, to alert the operator to the existence of internal pressure prior to opening the closure. In addition, the primary door seal is released before the threads are completely disengaged, which alerts the operator of internal pressure.

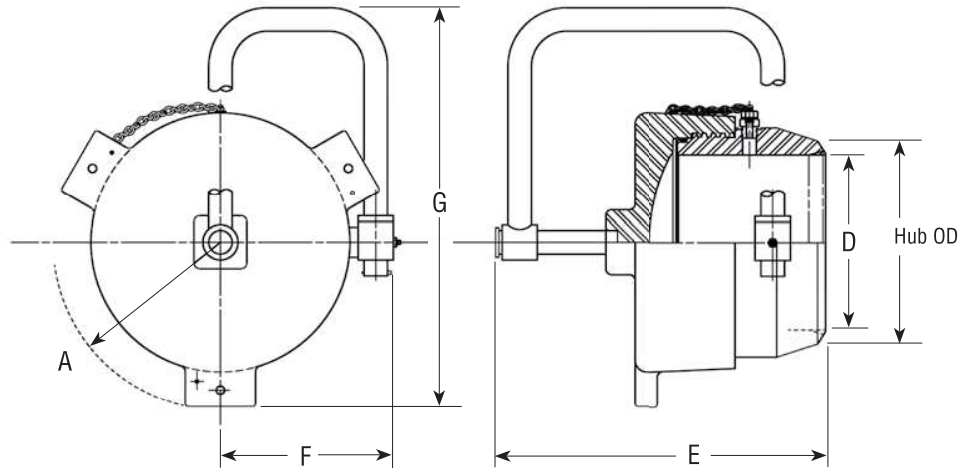


Viton® is a registered trademark of DuPont Performance Elastomers

USA: 1-800-571-7447
England: (44) 1-793-603600



D-500 Threaded Closures

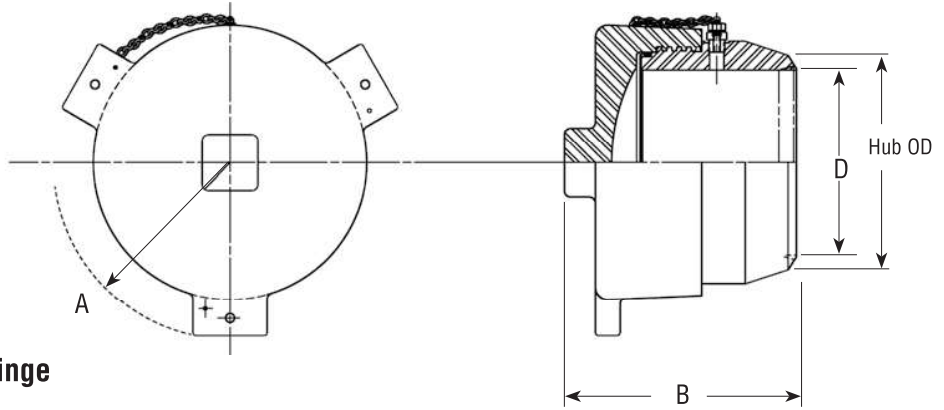


Threaded Closure with Horizontal Hinge Sizes 4- through 14-inch

Size	A	D	E	F	G	Hub OD Inches	WT. lbs	Part Number
4	3.85	3.83	10.11	4.88	11.13	4.50	25	19-5004-0163
6	5.42	5.76	11.66	6.00	12.02	6.63	49	19-5006-0163
8	7.14	7.44	14.07	7.38	17.00	8.63	125	19-5008-0163
10	8.79	9.31	15.93	8.38	20.36	10.75	180	19-5010-0163
12	10.17	11.06	17.29	9.43	22.82	12.75	245	19-5012-0163
14	11.51	12.13	17.87	10.25	25.01	14.00	325	19-5014-0163

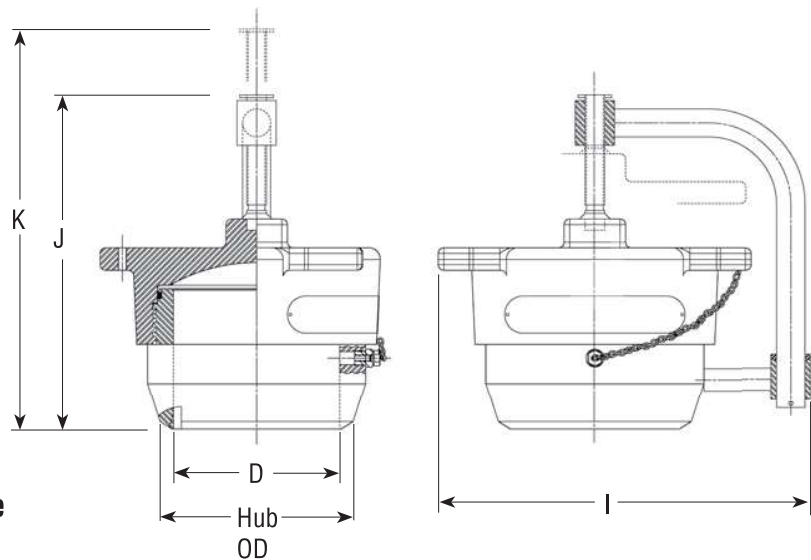


D-500 Threaded Closures



Threaded Closure without Hinge
Sizes 2- through 8-inch

Size Inches	A Inches	B Inches	D Inches	Hub OD Inches	WT. Lbs.	Part Number
2	2.55	5.06	1.94	2.38	10	19-5002-0063
3	3.31	5.36	2.90	3.50	14	19-5003-0063
4	3.85	6.32	3.83	4.50	18	19-5004-0063
6	5.42	7.47	5.76	6.63	43	19-5006-0063
8	7.14	9.37	7.44	8.63	100	19-5008-0063



Threaded Closure with Vertical Hinge
Sizes 4- through 8-inch

Size Inches	D Inches	I Inches	J Inches	K Inches	Hub OD Inches	WT. (Approx.) Lbs.	Part Number
4	3.83	10.63	10.98	13.01	4.50	25	19-5004-1163
6	5.76	13.33	12.55	14.98	6.63	52	19-5006-1163
8	7.44	16.62	14.93	17.87	8.63	125	19-5008-1163



D-500 Threaded Closures

Pressure Ratings

Nominal Pipe Size (Inches)	Stocked for Weld on to (Wall Thickness)	Maximum Allowable Working Pressure in psi						
		B31.3	B31.4 / B31.8				ASME VIII	Max Test Pressure
			.40DF	.50 DF	.60 DF	.72 DF	DIV 1	
2	XS (.218)	2940	2135	2670	3205	3845	2375	4825
	STD(.154)	2470	2135	2670	3205	3845	2375	4825
3	XS (.300)	2500	1815	2270	2725	3270	2020	4100
	STD(.216)	2415	1815	2270	2725	3270	2020	4100
4	XS (.337)	2345	1705	2130	2555	3070	1895	3840
	STD(.237)	2060	1705	2130	2555	3070	1895	3840
6	XS (.432)	2100	1525	1910	2290	2750	1695	3450
	STD(.280)	1665	1525	1910	2290	2750	1695	3450
8	XS (.500)	2110	1535	1920	2305	2765	1705	3475
	STD (.322)	1465	1535	1920	2305	2765	1550	3475
10	XS (.500)	1875	1520	1900	2280	2740	1690	3425
	STD(.365)	1335	1425	1780	2135	2565	1415	3225
12	XS (.500)	1570	1575	1970	2365	2835	1660	3550
	STD(.375)	1155	1235	1540	1850	2220	1225	2800
14	XS (.500)	1425	1500	1875	2250	2700	1505	3375
	STD(.375)	1050	1125	1405	1685	2025	1115	2550

Temperature Ratings

-20°F (-29°C) to 100°F (38°C)

Temperatures greater than 100°F (38°C) and less than or equal to 500°F (242°C) at reduced MAWP with suitable O-Ring material.

Replacement O-Rings

Nominal Pipe Size (Inches)	Primary Seal O-Ring		Pressure Warning Lock			
	Viton® (Standard)	Buna-N	Screw	Bushing	Viton® O-Ring (Std)	Buna-N O-Ring
2	00-1247-0022	00-0117-0036	00-4576-0046	00-5213-0027	00-1245-0001	00-0115-0004
3	00-1247-0019	00-0117-0023	00-4576-0046	00-5213-0027	00-1245-0001	00-0115-0004
4	00-1247-0013	00-0117-0027	00-4576-0046	00-5213-0027	00-1245-0001	00-0115-0004
6	00-1248-0030	00-0118-0043	00-4576-0046	00-5213-0027	00-1245-0001	00-0115-0004
8	00-1248-0031	00-0118-0061	00-4576-0046	00-5213-0027	00-1245-0001	00-0115-0004
10	00-1248-0032	00-0118-0054	00-4576-0047	00-5213-0001	00-1245-0008	00-0115-0025
12	00-1249-0016	00-0119-0017	00-4576-0047	00-5213-0001	00-1245-0008	00-0115-0025
14	00-1249-0017	00-0119-0008	00-4576-0047	00-5213-0001	00-1245-0008	00-0115-0025

D-2000 Quick Opening Closures

Sizes: 4-inch and larger



T.D. Williamson

Bulletin No: 5100.003.04

Version: 12.2017

Cross Indexing No: n/a

Supersedes: 5100.003.03 (01.2012)



Description

T.D. Williamson, Inc.'s Clamp Ring Closures are quick-opening closures, easily operated by one person. The closure is designed primarily for horizontal installation, meaning the door swings open on the horizontal axis. However, the closure can be installed on a vertical installation. In the latter case, a counterbalance can be provided to facilitate opening.

Features

The Clamp Ring Closures, available in sizes 4-inches and larger, offer important advantages:

A reliable seal—The large, cross-sectional diameter O-ring located on the periphery of the closure's barrel collar provides positive sealing as well as protection from damage by tools, pigs or debris.

Pressure warning device—The Clamp Ring Closures are equipped with a pressure warning lock, in accordance with UG-35 of ASME Sect. VIII, Div. 1, to alert the operator to the existence of internal pressure prior to opening the closure.

Fast, easy, safe operation—One person can easily and quickly open or close the Clamp Ring Closures. Because it operates so easily, this closure is less time-consuming than other closures on the market. Because an operator must stand to the side when opening the pressure warning lock, clamp ring and door, the Clamp Ring Closures is safer to open than other closures that require an operator to stand in front of the door.

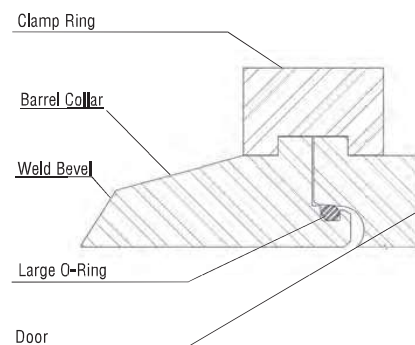
Clamp Ring Closures feature a lever-type actuator on sizes 4- through 30-inches. Sizes 32-inches and larger have a door assist (ratchet binder). Closures smaller than 32-inches at higher pressure also may feature a door assist mechanism.

Options

T.D. Williamson, Inc. is committed to providing you with the exact product to assist you in planning, budgeting and meeting the specifications for your individual application needs. The following options are available:

- Special materials
- Material certification
- Pressure testing
- Special O-ring material (standard O-ring material is Buna-N or Viton®)
- Taper-bored to match pipe wall thickness
- Special design for vertical installation
- Larger sizes
- Pressure classes up to 2500#
- ASME Sect VIII, Div I

Consult factory for optional items.



Dimensions and Part Numbers



T.D. Williamson

5100.003.04 - p2

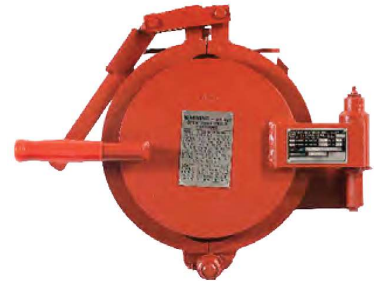
4- through 14-inch D-2000 Clamp Ring Closures MAWP

Size (Inches)	Part Number	Weld Bevel Thickness	B31.4 F=.72 (psi)	B31.4/B31.8 F=.60 (psi)	TP Max
4	19-6704-0600-51	.337	1775	1480	2220
4	19-6704-0600-52	.250	1775	1480	2220
4	19-6704-0600-53	.188	1775	1480	2220
6	19-6706-0600-51	.432	1775	1480	2220
6	19-6706-0600-52	.375	1775	1480	2220
6	19-6706-0600-53	.313	1775	1480	2220
6	19-6706-0600-54	.250	1775	1480	2220
6	19-6706-0600-55	.188	1775	1480	2220
8	19-6708-0600-51	.500	1775	1480	2220
8	19-6708-0600-52	.438	1775	1480	2220
8	19-6708-0600-53	.375	1775	1480	2220
8	19-6708-0600-54	.313	1775	1480	2220
8	19-6708-0600-55	.250	1775	1480	2220
8	19-6708-0600-56	.188	1775	1480	2220
10	19-6710-0600-51	.500	1775	1480	2220
10	19-6710-0600-52	.438	1775	1480	2220
10	19-6710-0600-53	.375	1775	1480	2220
10	19-6710-0600-54	.313	1775	1480	2220
10	19-6710-0600-55	.250	1775	1480	2220
10	19-6710-0600-56	.188	1725	1440	2160
12	19-6712-0600-51	.500	1775	1480	2220
12	19-6712-0600-52	.438	1775	1480	2220
12	19-6712-0600-53	.375	1775	1480	2220
12	19-6712-0600-54	.313	1775	1480	2220
12	19-6712-0600-55	.250	1775	1480	2220
12	19-6712-0600-56	.188	1455	1215	1825
14	19-6714-0600-51	.500	1775	1480	2220
14	19-6714-0600-52	.438	1775	1480	2220
14	19-6714-0600-53	.375	1775	1480	2220
14	19-6714-0600-54	.313	1775	1480	2220
14	19-6714-0600-55	.250	1770	1475	2215
14	19-6714-0600-56	.188	1325	1105	1660

NOTICE: New 19-67sz series part number is same as old 19-37sz series except that it now does NOT include the door O-ring.
See additional O-ring part number table on page 10 for common O-ring options (must be ordered separately). Other O-ring materials are also available on a special-order basis.

Dimensions and Weights

Size	Wt (Lb)	H x W x L	Part Number
4	60	8 x 12 x 16	19-6704-0600
6	75	8 x 14 x 18	19-6706-0600
8	120	8 x 16 x 20	19-6708-0600
10	160	8 x 19 x 23	19-6710-0600
12	200	10 x 21 x 26	19-6712-0600
14	260	10 x 22 x 27	19-6714-0600



■ 8-inch D-2000 Clamp Ring Closure

Dimensions and Part Numbers



T.D. Williamson

5100.003.04 - p3

16- through 30-inch-inches D-2000 Clamp Ring Closures MAWP

Size (Inches)	Part Number	Weld Bevel Thickness	B31.4 F=.72 (psi)	B31.4/B31.8 F=.60 (psi)	TP Max
16	19-6716-0600-51	.500	1775	1480	2220
16	19-6716-0600-52	.375	1775	1480	2220
16	19-6716-0600-53	.250	1545	1290	1935
18	19-6718-0600-51	.625	1775	1480	2220
18	19-6718-0600-52	.500	1775	1480	2220
18	19-6718-0600-53	.375	1775	1480	2220
18	19-6718-0600-54	.250	1380	1150	1725
20	19-6720-0600-51	.750	1775	1480	2220
20	19-6720-0600-52	.625	1775	1480	2220
20	19-6720-0600-53	.500	1775	1480	2220
20	19-6720-0600-54	.375	1775	1480	2220
20	19-6720-0600-55	.250	1240	1035	1555
22	19-6722-0600-51	.750	1775	1480	2220
22	19-6722-0600-52	.625	1775	1480	2220
22	19-6722-0600-53	.500	1775	1480	2220
22	19-6722-0600-54	.375	1690	1410	2115
22	19-6722-0600-55	.250	1125	940	1410
24	19-6724-0600-51	.875	1775	1480	2220
24	19-6724-0600-52	.750	1775	1480	2220
24	19-6724-0600-53	.625	1775	1480	2220
24	19-6724-0600-54	.500	1775	1480	2220
24	19-6724-0600-55	.375	1545	1290	1935
24	19-6724-0600-56	.250	1030	860	1290

Dimensions and Weights

Size	Wt(Lb)	H x W x L	Part Number
16	420	11 x 29 x 34	19-6716-0600
18	550	12 x 31 x 35	19-5618-0600
20	700	12 x 33 x 37	19-6720-0600
22	825	13 x 35 x 38	19-6722-0600
24	955	13 x 38 x 43	19-6724-0600



■ 20-inch D-2000 Clamp Ring Closure

Dimensions and Part Numbers



T.D. Williamson

5100.003.04 - p4

26- through 30-inch D-2000 Clamp Ring Closures MAWP

Size (Inches)	Part Number	Weld Bevel Thickness	B31.4 F=.72 (psi)	B31.4/B31.8 F=.60 (psi)	TP Max
26	19-6726-0600-51	.875	1775	1480	2220
26	19-6726-0600-52	.750	1775	1480	2220
26	19-6726-0600-53	.625	1775	1480	2220
26	19-6726-0600-54	.500	1775	1480	2220
26	19-6726-0600-55	.375	1425	1190	1785
26	19-6726-0600-56	.250	950	795	1195
28	19-6728-0600-51	.875	1175	1480	2220
28	19-6728-0600-52	.750	1775	1480	2220
28	19-6728-0600-53	.625	1775	1480	2220
28	19-6728-0600-54	.500	1770	1475	2215
28	19-6728-0600-55	.375	1325	1105	1660
30	19-6730-0600-51	1.000	1775	1480	2220
30	19-6730-0600-52	.875	1775	1480	2220
30	19-6730-0600-53	.750	1775	1480	2220
30	19-6730-0600-54	.625	1775	1480	2220
30	19-6730-0600-55	.500	1655	1380	2070
30	19-6730-0600-56	.375	1240	1035	1555

Dimensions and Weights

Size	Wt (Lb)	H x W x L	Part Number
26	1400	15 x 44 x 45	19-6726-0600
28	1580	15 x 46 x 47	19-6728-0600
30	1850	16 x 48 x 49	19-6730-0600



■ 20-inch D-2000 Clamp Ring Closure

Dimensions and Part Numbers



T.D. Williamson

5100.003.04 - p5

32- through 42-inch D-2000 Clamp Ring Closures MAWP

Size (Inches)	Part Number	Weld Bevel Thickness	B31.4 F=.72 (psi)	B31.4/B31.8 F=.60 (psi)	TP Max
32	19-6732-0600-51	1.000	1775	1480	2220
32	19-6732-0600-52	.875	1775	1480	2220
32	19-6732-0600-53	.750	1775	1480	2220
32	19-6732-0600-54	.625	1775	1480	2220
32	19-6732-0600-55	.500	1545	1290	1935
32	19-6732-0600-56	.375	1160	970	1455
34	19-6734-0600-51	1.000	1775	1480	2220
34	19-6734-0600-52	.875	1775	1480	2220
34	19-6734-0600-53	.750	1775	1480	2220
34	19-6734-0600-54	.625	1775	1480	2220
34	19-6734-0600-55	.500	1455	1215	1825
34	19-6734-0600-56	.375	1090	910	1365
36	19-6736-0600-51	1.125	1775	1480	2220
36	19-6736-0600-52	1.000	1775	1480	2220
36	19-6736-0600-53	.875	1775	1480	2220
36	19-6736-0600-54	.750	1775	1480	2220
36	19-6736-0600-55	.625	1720	1435	2155
36	19-6736-0600-56	.500	1380	1150	1725
36	19-6736-0600-57	.375	1030	860	1290
40	19-6740-0600-51	1.250	1775	1480	2220
40	19-6740-0600-52	1.125	1775	1480	2220
40	19-6740-0600-53	1.000	1775	1480	2220
40	19-6740-0600-54	.875	1775	1480	2220
40	19-6740-0600-55	.750	1775	1480	2220
40	19-6740-0600-56	.625	1545	1290	1935
40	19-6740-0600-57	.500	1240	1035	1555
40	19-6740-0600-58	.375	930	775	1165
42	19-6742-0600-51	1.250	1775	1480	2220
42	19-6742-0600-52	1.125	1775	1480	2220
42	19-6742-0600-53	1.000	1775	1480	2220
42	19-6742-0600-54	.875	1775	1480	2220
42	19-6742-0600-55	.750	1770	1475	2215
42	19-6742-0600-56	.625	1475	1230	1845
42	19-6742-0600-58	.500	1180	985	1480

Dimensions and Weights

Size	Wt (Lb)	H x W x L	Part Number
32	2500	16 x 51 x 54	19-6732-0600
34	2850	16 x 54 x 57	19-6734-0600
36	3250	17 x 56 x 60	19-6736-0600
40	4500	19 x 62 x 64	19-6740-0600
42	4775	19 x 64 x 67	19-6742-0600



■ 36-inch D-2000 Clamp Ring Closure

Dimensions and Part Numbers



T.D. Williamson

5100.003.04 - p6

44-inch and larger D-2000 Clamp Ring Closures MAWP

Size (Inches)	Part Number	Weld Bevel Thickness	B31.4 F=.72 (psi)	B31.4/B31.8 F=.60 (psi)	TP Max
44	19-6744-0600-51	1.000	1775	1480	2220
44	19-6744-0600-52	.875	1775	1480	2220
44	19-6744-0600-53	.750	1775	1480	2220
44	19-6744-0600-54	.625	1715	1430	2145
44	19-6744-0600-55	.500	1370	1145	1720
44	19-6744-0600-56	.375	1025	855	1285
46	19-6746-0600-51	1.125	1775	1480	2220
46	19-6746-0600-52	1.000	1775	1480	2220
46	19-6746-0600-53	.875	1775	1480	2220
46	19-6746-0600-54	.750	1775	1480	2220
46	19-6746-0600-55	.625	1570	1090	1965
46	19-6746-0600-56	.500	1260	1050	1575
46	19-6746-0600-57	.375	940	785	1180
48	19-6748-0600-51	1.125	1775	1480	2220
48	19-6748-0600-52	1.000	1775	1480	2220
48	19-6748-0600-53	.875	1775	1480	2220
48	19-6748-0600-54	.750	1775	1480	2220
48	19-6748-0600-55	.625	1570	1310	1965
48	19-6748-0600-56	.500	1260	1050	1575
48	19-6748-0600-57	.375	940	785	1180

Dimensions and Weights

Size	Wt (Lb)	H x W x L	Part Number
44	4850	19 x 65 x 69	19-6744-0600
46	5400	19 x 67 x 72	19-6746-0600
48	6000	19 x 70 x 73	19-6748-0600



■ 36-Inch D-2000 Clamp Ring Closure

North & South America: +1 918 447 5000 ■ Europe / Africa / Middle East: +32 67 28 3611 ■ Asia Pacific: +65 6364 8520 ■ www.tdwilliamson.com

Data subject to change without notice. / Dimensions not for construction unless certified. / * Registered trademark of T.D. Williamson, Inc. in the United States and other countries. / TM Trademark of T.D. Williamson, Inc. in the United States and other countries. / © Copyright 2017 All rights reserved. T.D. Williamson, Inc.

Dimensions and Part Numbers



T.D. Williamson

5100.003.04 - p7

4- through 14-inch D-2000 Clamp Ring Closures MAWP

Size (Inches)	Part Number	Weld Bevel Thickness	B31.4/B31.8 F = 0.50 (psi)	Test Pressure Max
4	19-5704-0600-51	0.337	1480	2665
4	19-5704-0600-52	0.250	1480	2665
4	19-5704-0600-53	0.188	1480	2665
6	19-5706-0600-51	0.432	1480	2665
6	19-5706-0600-52	0.375	1480	2665
6	19-5706-0600-53	0.313	1480	2665
6	19-5706-0600-54	0.250	1480	2665
6	19-5706-0600-55	0.188	1480	2665
6	19-5706-0600-56	0.563	1480	2665
8	19-5708-0600-51	0.500	1480	2665
8	19-5708-0600-52	0.438	1480	2665
8	19-5708-0600-53	0.375	1480	2665
8	19-5708-0600-54	0.313	1480	2665
8	19-5708-0600-55	0.250	1480	2665
8	19-5708-0600-56	0.188	1480	2665
10	19-5710-0600-51	0.500	1480	2665
10	19-5710-0600-52	0.438	1480	2665
10	19-5710-0600-53	0.375	1480	2665
10	19-5710-0600-54	0.313	1480	2665
10	19-5710-0600-55	0.250	1480	2665
10	19-5710-0600-56	0.188	1480	2665
12	19-5712-0600-51	0.500	1480	2665
12	19-5712-0600-52	0.438	1480	2665
12	19-5712-0600-53	0.375	1480	2665
12	19-5712-0600-54	0.313	1480	2665
12	19-5712-0600-55	0.250	1480	2665
12	19-5712-0600-56	0.188	1320	2385
14	19-5714-0600-51	0.500	1480	2665
14	19-5714-0600-52	0.438	1480	2665
14	19-5714-0600-53	0.375	1480	2665
14	19-5714-0600-54	0.313	1480	2665
14	19-5714-0600-55	0.250	1480	2665
14	19-5714-0600-56	0.188	1205	2170

NOTICE: New 19-57sz series part number does NOT include the door O-ring.
See additional O-ring part number table on page 10 for common O-ring options (must be ordered separately).
Other O-ring materials are also available on a special-order basis.

Dimensions and Weights

Size	Wt (Lb)	H x W x L	Part Number
4	60	8 x 12 x 16	19-5704-0600
6	75	8 x 14 x 18	19-5706-0600
8	120	8 x 16 x 20	19-5708-0600
10	160	8 x 19 x 23	19-5710-0600
12	200	10 x 21 x 26	19-5712-0600
14	260	10 x 22 x 27	19-5714-0600

Dimensions and Part Numbers



T.D. Williamson

5100.003.04 - p8

16- through 30-inch D-2000 Clamp Ring Closures MAWP

Size (Inches)	Part Number	Weld Bevel Thickness	B31.4/B31.8 F = 0.50 (psi)	Test Pressure Max
16	19-5716-0600-51	0.750	1480	2665
16	19-5716-0600-52	0.625	1480	2665
16	19-5716-0600-53	0.500	1480	2665
16	19-5716-0600-54	0.375	1480	2665
16	19-5716-0600-55	0.250	1405	2530
18	19-5718-0600-51	0.625	1480	2665
18	19-5718-0600-52	0.500	1480	2665
18	19-5718-0600-53	0.375	1480	2665
18	19-5718-0600-54	0.250	1250	2250
20	19-5720-0600-51	0.750	1480	2665
20	19-5720-0600-52	0.625	1480	2665
20	19-5720-0600-53	0.500	1480	2665
20	19-5720-0600-54	0.375	1480	2665
20	19-5720-0600-55	0.250	1125	2025
20	19-5720-0600-56	N.A.	N.A.	N.A.
20	19-5720-0600-57	0.563	1480	2665
22	19-5722-0600-51	0.750	1480	2665
22	19-5722-0600-52	0.688	1480	2665
22	19-5722-0600-53	0.625	1480	2665
22	19-5722-0600-54	0.500	1480	2665
22	19-5722-0600-55	0.375	1480	2665
22	19-5722-0600-56	0.250	1020	1530
24	19-5724-0600-51	0.875	1480	2665
24	19-5724-0600-52	0.750	1480	2665
24	19-5724-0600-53	0.625	1480	2665
24	19-5724-0600-54	0.500	1480	2665
24	19-5724-0600-55	0.375	1405	2530
24	19-5724-0600-56	0.250	935	1685
24	19-5724-0600-57	0.563	1480	2220
26	19-5726-0600-51	0.875	1480	2665
26	19-5726-0600-52	0.750	1480	2665
26	19-5726-0600-53	0.625	1480	2665
26	19-5726-0600-54	0.500	1480	2665
26	19-5726-0600-55	0.375	1295	2335
26	19-5726-0600-56	0.250	865	1560
30	19-5730-0600-51	1.000	1480	2665
30	19-5730-0600-52	0.875	1480	2665
30	19-5730-0600-53	0.750	1480	2665
30	19-5730-0600-54	0.625	1480	2665
30	19-5730-0600-55	0.500	1480	2665
30	19-5730-0600-56	0.375	1125	2025

Dimensions and Weights

Size	H x Wt(Lb)		Part Number
16	420	11 x 29 x 34	19-5716-0600
18	550	12 x 31 x 35	19-5718-0600
20	700	12 x 33 x 37	19-5720-0600
22	825	13 x 35 x 38	19-5722-0600
24	955	13 x 38 x 43	19-5724-0600
26	1400	15 x 44 x 45	19-5726-0600
30	1850	16 x 48 x 49	19-5730-0600

North & South America: +1 918 447 5000 ■ Europe / Africa / Middle East: +32 67 28 3611 ■ Asia Pacific: +65 6364 8520 ■ www.tdwilliamson.com

Data subject to change without notice. / Dimensions not for construction unless certified. / * Registered trademark of T.D. Williamson, Inc. in the United States and other countries. / TM Trademark of T.D. Williamson, Inc. in the United States and other countries. / © Copyright 2017 All rights reserved. T.D. Williamson, Inc.

Dimensions and Part Numbers



T.D. Williamson

5100.003.04 - p9

32- through 42-inch-inches D-2000 Clamp Ring Closures MAWP

Size (Inches)	Part Number	Weld Bevel Thickness	B31.4/B31.8 F = 0.50 (psi)	Test Pressure Max
32	19-5732-0600-51	1.000	1480	2665
32	19-5732-0600-52	0.875	1480	2665
32	19-5732-0600-53	0.750	1480	2665
32	19-5732-0600-54	0.625	1480	2665
32	19-5732-0600-55	0.500	1405	2530
32	19-5732-0600-56	0.375	1050	1890
36	19-5736-0600-51	1.125	1480	2665
36	19-5736-0600-52	1.000	1480	2665
36	19-5736-0600-53	0.875	1480	2665
36	19-5736-0600-54	0.750	1480	2665
36	19-5736-0600-55	0.625	1480	2665
36	19-5736-0600-56	0.500	1250	2250
36	19-5736-0600-57	0.375	935	1685
38	19-5738-0600-51	1.250	1480	2665
38	19-5738-0600-52	1.125	1480	2665
38	19-5738-0600-53	1.000	1480	2665
38	19-5738-0600-54	0.875	1480	2665
38	19-5738-0600-55	0.750	1480	2665
38	19-5738-0600-56	0.625	1480	2665
38	19-5738-0600-57	0.500	1180	1770
38	19-5738-0600-58	0.375	885	1330
42	19-5742-0600-51	1.250	1480	2665
42	19-5742-0600-52	1.125	1480	2665
42	19-5742-0600-53	1.000	1480	2665
42	19-5742-0600-54	0.875	1480	2665
42	19-5742-0600-55	0.750	1480	2665
42	19-5742-0600-56	0.625	1335	2405
42	19-5742-0600-57	0.500	1070	1930
42	19-5742-0600-58	0.688	1470	2650
42	19-5742-0600-59	0.375	800	1440

Dimensions and Weights

Size	Wt (Lb)	H x W x L	Part Number
32	2500	16 x 51 x 54	19-5732-0600
36	3250	17 x 56 x 60	19-5736-0600
40	4500	19 x 62 x 64	19-5740-0600
42	4775	19 x 64 x 67	19-5742-0600

North & South America: +1 918 447 5000 ■ Europe / Africa / Middle East: +32 67 28 3611 ■ Asia Pacific: +65 6364 8520 ■ www.tdwilliamson.com

Data subject to change without notice. / Dimensions not for construction unless certified. / * Registered trademark of T.D. Williamson, Inc. in the United States and other countries. / TM Trademark of T.D. Williamson, Inc. in the United States and other countries. / © Copyright 2017. All rights reserved. T.D. Williamson, Inc.



Replacement Door Seal O-Rings for Standard D-2000 Clamp Ring Closures

Size	Buna-N (Standard)	Viton
4	19-3704-0615	19-3700-0468-23
6	19-3706-0615	19-3700-0680-23
8	19-3708-0615	19-3700-0876-23
10	19-3710-0615	19-3700-1071-23
12	19-3712-0615	19-3700-1256-23
14	19-3714-0615	19-3700-1371-23
16	19-3716-0615	19-3700-1556-53
18	19-3718-0615	19-3700-1740-53
20	19-3720-0615	19-3700-1923-53
22	19-3722-0615	19-3700-2106-53
24	19-3724-0615	19-3700-2290-53
26	19-3726-0615	19-3700-2542-53
28	19-3728-0615	19-3700-2725-53
30	19-3730-0615	19-3700-2908-53
32	19-3732-0615	19-3700-3092-53
34	19-3734-0615	19-3700-3275-53
36	19-3736-0615	19-3700-3458-53
40	19-3740-0615	19-3700-3894-53
42	19-3742-0615	19-3700-4077-53
44	19-3744-0615	19-3700-4327-53
46	19-3746-0615	19-3700-4513-53
48	19-3748-0615	19-3700-4699-53

Pressure Warning Lock Components for Standard D-2000 Closures

Closure Size	PWL Screw	PWL Bushing	PWL O-Ring Buna-N (standard)	PWL O-Ring Viton
4"-14"	00-4576-0018	00-5213-0001	00-0115-0025	00-1245-0008
16"-30"	00-4576-0037	00-5213-0012	00-0115-0002	00-1245-0007
32"-48"	00-4576-0038	00-5213-0013	00-0115-0035	00-1245-0012